

## EPOS Compact Large -CS

### *DC Power System*



#### **GENERAL DESCRIPTION**

The EPOS Compact Large system has been designed to provide uninterrupted DC power for demanding industry and telecom applications.

A fully integrated system is provided in a single 800 mm wide cabinet with ample room for installation and cabling. The system is scalable from 5 kW to 80 kW at 48 VDC nominal output.

The EPOS Compact Large systems are based on the XCRM rectifier module and the CX system controller. It consists of a system cabinet and rectifier shelves, together with mains, battery and load connection areas. The programme also includes several options.

#### **FEATURES**

- Fan cooled
- High power, all-inclusive system cabinet
- Up to 80 kW, 1600 A in single cabinet.
- 48 VDC
- Cabinet (HxWxD) 2000 x 800x 600 mm
- Ample space for battery and load distribution.
- Installation friendly design
- Rectifier: XCRM 48/5000
- Advanced controller with multiple remote control options.

## SPECIFICATIONS

### System configurations

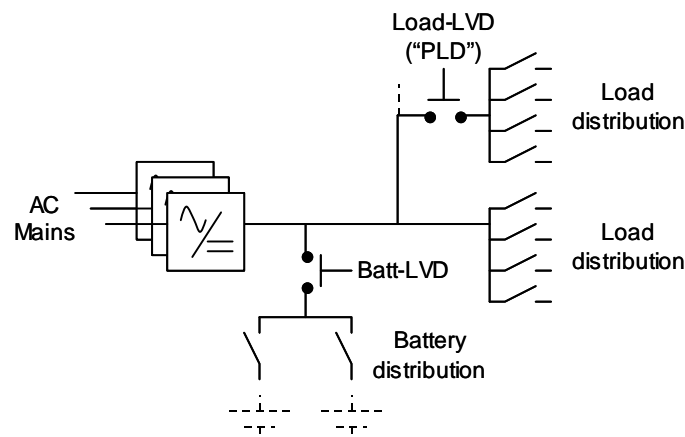
The EPOS Compact Large standard configurations are specified below. Other configurations are available on request.

Please refer to specific datasheets on Controller and Rectifier for further details and information on these.

Description	EPOS Compact Large 48-5000.8-CS	EPOS Compact Large 48-5000.12-CS	EPOS Compact Large 48-5000.16-CS
Output volt, min/nom/max	42 / 48 / 56 VDC		
Output current	800 A @ 54 VDC	1200 A @ 54 VDC	1600 A @ 54 VDC
Input current per phase Max value, 1x 3P supply.	180 VAC: 89 A	180 VAC: 133 A	180 VAC: 177 A
Rectifier	XCRM 48/5000		
Output power charact.	Constant current		
Max number of rectifiers	8	12	16
Input voltage, P-N voltage	180-264 VAC		
AC wiring	Tailored to customer needs. Standard configuration with 3NPE Term Block + Individual rectifier 1p MCB, 40A.		
Input frequency	47 – 63 Hz		
AC Surge protection	No		
Cooling	Fan cooled		
Temperature range	-40 to +65 degC		
Ground reference	Positive ground		
Battery distribution	Tailored to customer needs. Options include MCB, MCCB, NH00, NH1, NH2, NH3.		
Load distribution	Tailored to customer needs. Options include MCB, MCCB, NH00, NH1, NH2, NH3.		
Low volt disconnect – Batt	Yes (optional)		
Low volt disconnect – Load	Single stage "PLD" (optional)		
Controller	System Controller CX		

### Enclosure

Description	C6
Dimensions (HxWxD)	2000 x 800 x 600 mm
Battery shelves	No
Placement	Floor
Cabling outlet	Through top
Door	Yes



## PRODUCT SELECTION GUIDE

### Tailor your system

To make the maximum of the powerful EPOS Compact Large system Efore tailors the system in close cooperation with you to match the needs for your particular application. This includes options for AC, battery and load distribution

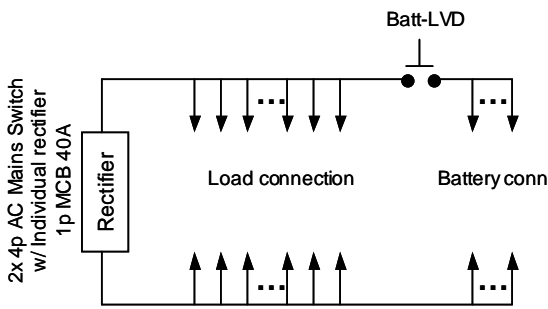
arrangements, low voltage disconnect of batteries and loads ("PLD"), controller set-up etc.

One standard configuration is available. Please refer to the list below.

### Pre-defined System configurations

The system listed comes all-inclusive, apart from rectifier modules, load and battery protection devices, and

accessories that need to be ordered separately.

Description	95MCE010-*
Configuration	EPOS Compact Large 48-5000.8-CS
Enclosure	C6 cabinet
AC connection	3NPE Term Block + Individual rectifier 1p MCB, 40A.
Controller	System Controller CX
Rectifier	Space for 8 rectifiers, type XCRM 48/5000. <i>Rectifier modules not included.</i>
Battery Distr.	space for 4x MCCB or 6x NH0 <i>No fuses or breakers included</i>
Load Distr.	35x MCB 1p (1-63A), Legrand 17x NH00 (10-160A) <i>No fuses or breakers included</i>
LVD	1x BattLVD
Accessories	Temperature probe
Circuit diagram	

### Rectifiers

Description	Part no.	Fits
XCRM 48/5000 (48 VDC, 100 A)	92E420-*	EPOS Compact Large 48-5000.8, .12 and .16

### Protection devices – MCCB Battery

Description	Part no.
MCCB 400A, D-curve	52500335

### Protection devices – MCB Load

Description	Part no.	Description	Part no.
MCB 10A, C-curve	52500109	MCB 32A, C-curve	52500113
MCB 16A, C-curve	52500110	MCB 40A, C-curve	52500276
MCB 20A, C-curve	52500111	MCB 50A, C-curve	52500220
MCB 25A, C-curve	52500112	MCB 63A, C-curve	52500114

\* Note, "-" to be replaced with revision letter (A,B,C,...) for a complete, valid product code.

**Protection devices – NH1**

Description	Part no.	Description	Part no.
NH1 fuse link, 80A	0SU421	NH1 fuse link, 200A	0SU460
NH1 fuse link, 125A	0SU440	NH1 fuse link, 250A	0SU465
NH1 fuse link, 160A	0SU450		

**Protection devices – NH00**

Description	Part no.	Description	Part no.
NH00 fuse link, 10A	0SU350	NH00 fuse link, 50A	0SU400
NH00 fuse link, 16A	0SU360	NH00 fuse link, 63A	0SU410
NH00 fuse link, 20A	0SU370	NH00 fuse link, 80A	0SU420
NH00 fuse link, 25A	0SU380	NH00 fuse link, 100A	0SU430
NH00 fuse link, 35A	0SU390	NH00 fuse link, 125A	0SU436

**Accessories**

Description	Part no.
Temperature probe, 3 m	94E480-*

\* Note, “-“ to be replaced with revision letter (A,B,C,...) for a complete,valid product code.